



GAS ROTISSERIE

GRANDES FLAMMES OLYMPIA RANGE

**Ref.: 1375-6OLG 975-6OLG
1375-4OLG 975-4OLG
975-2OLG**

TYPE A

**EC TYPE EXAMINATION CERTIFICATE
N° 1312BP4105**

INSTALLERS MANUAL

(last modification 26/07/2018)



Membre de la Chaîne des Rôtisseurs

USA/St GARDENA Tél.: (310) 671 7254 - Fax : (310) 671 8171 - E-mail : info@rotisolusa.com
FRANCE Tél.: (331) 6421 8000 - Fax : (331) 6426 1685 - E-mail : export@rotisol.com

1. TECHNICAL SPECIFICATIONS OF THE DEVICE

1.1. GENERAL

Rôtisserie range " Grandes Flammes" gas powered with electrical power of 230V + earth.

Reference	Lenght (mm)	depth (mm)	Height (mm)	weight (kg)	Gas power (kw)	Electrical power (kw)
1375-6OLG	1365	712	1988	415	45	0,74
975-6OLG	965	712	1988	325	30	0,59
1375-4OLG	1365	702	1360	250	30	0,62
975-4OLG	965	702	1360	200	20	0,47
975-2OLG	965	702	980	140	10	0,35

The device is for professional use and should be used by qualified personnel.

Before starting any operation, please see these instructions. Carefully keep available near the rotisserie.

The upgrading of premises are at users expense.

Every cooking appliance generates heat and particles of fat.

The unit should be installed in accordance within norm's and regulations in force in a well-ventilated area. With sufficient mechanical extraction and fire prevention. Would recommend that you call upon a qualified company for the work to be done according to the local norm's extraction, gas connection, building work.

We recommend that you call upon a qualified installer for the connection of the unit to the gas and electrical supplies.

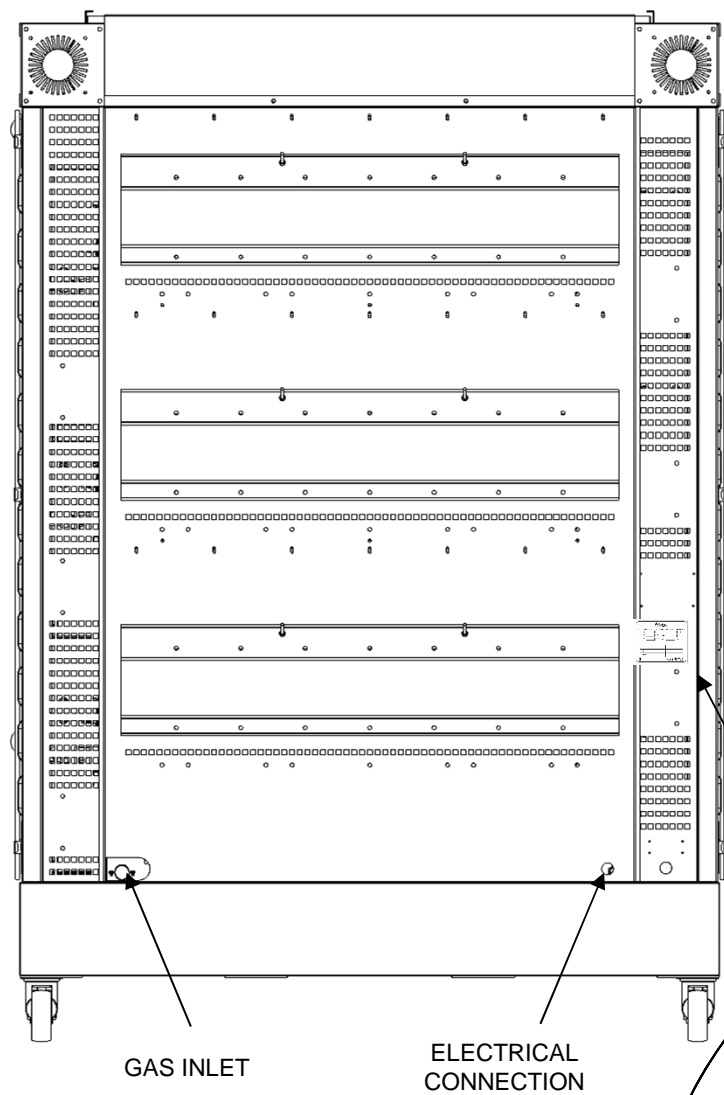
Interventions on the electrical and gas parts must be performed by qualified personnel accordance with the standards.

The company is not liable for damages if:

- improper use of the device
- non-compliance with standards
- incorrect installation
- non compliance with guidance on maintenance
- unauthorized modification
- installation of non-original spare parts
- installation and use of the rotisserie different than those provided by the manufacturer

1.2. LOCATION OF THE PLATE

The plate is located on the back right in the middle of the amount.



Rotisol

Z.I. LA TRENTAINE 77507 CHELLES Cdx- FRANCE - Tél:(1)64.21.80.00 Fax:(1)64.26.16.85

Qn kW MOD TYPE A

G 20 m³/h N° SERIE

G 25 m³/h G 31 kg/h IP=

U=

	BE	DE	ES , GB	FR
cat.:				
p(mbar)				

CE Made in FRANCE

1.3. COMPULSORY MARKINGS

1.3.1. ON THE ROTISSERIE AND ON THE PACKING

STUCK ON THE PACKING AND ON THE FRONT ON THE UNIT



STUCK ON THE BACK AT THE ABOVE THE GAS INLET



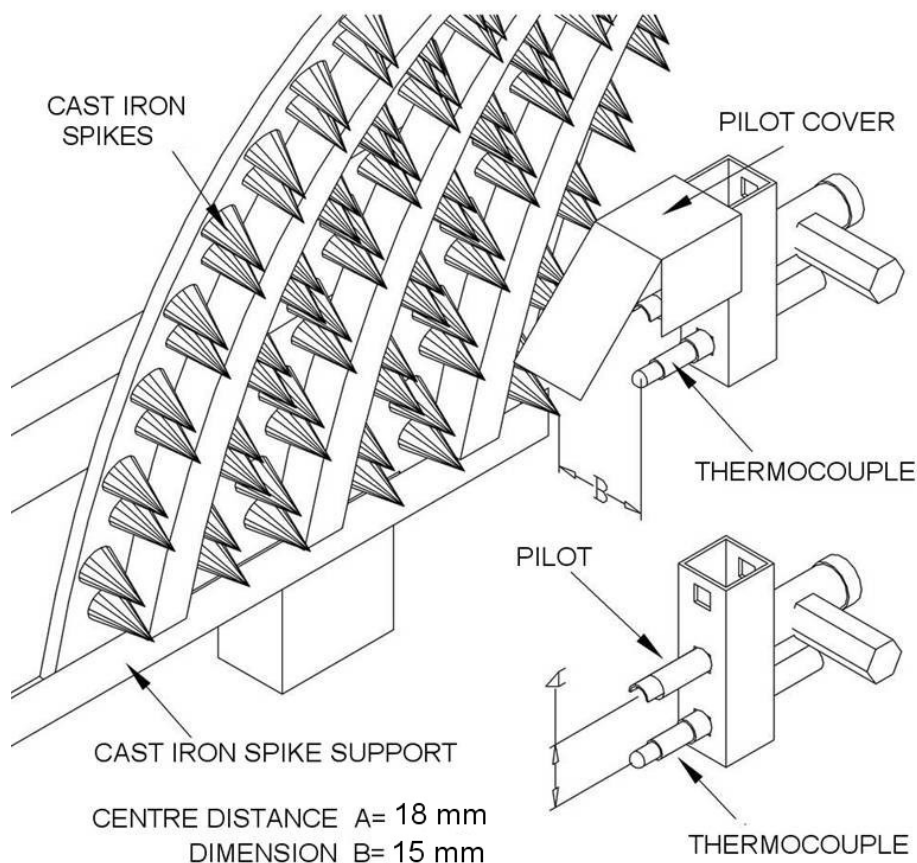
1.3.2. ON PACKAGING

<div style="display: flex; justify-content: space-between; border-top: 1px solid black; border-bottom: 1px solid black; padding: 5px 0;"> 300 170 </div> <div style="text-align: center; font-size: 48px; font-weight: bold; margin: 10px 0;"> Rotisol </div>																	
Destinataire : _____ _____																	
Ville : _____ Code postal : _____																	
Pays : _____	<table border="1" style="width: 100%; border-collapse: collapse;"> <tr> <td colspan="2">GAZ NAT=</td> <td><input type="checkbox"/> G20(20mbar)</td> <td><input type="checkbox"/> G20(25mbar)</td> <td><input type="checkbox"/> G25(20mbar)</td> <td><input type="checkbox"/> G25(25mbar)</td> <td><input type="checkbox"/></td> <td><input type="checkbox"/></td> </tr> <tr> <td colspan="2">GAZ PROPANE=</td> <td><input type="checkbox"/> G31(30mbar)</td> <td><input type="checkbox"/> G31(37mbar)</td> <td><input type="checkbox"/> G31(50mbar)</td> <td><input type="checkbox"/> G30(30mbar)</td> <td><input type="checkbox"/></td> <td><input type="checkbox"/></td> </tr> </table>	GAZ NAT=		<input type="checkbox"/> G20(20mbar)	<input type="checkbox"/> G20(25mbar)	<input type="checkbox"/> G25(20mbar)	<input type="checkbox"/> G25(25mbar)	<input type="checkbox"/>	<input type="checkbox"/>	GAZ PROPANE=		<input type="checkbox"/> G31(30mbar)	<input type="checkbox"/> G31(37mbar)	<input type="checkbox"/> G31(50mbar)	<input type="checkbox"/> G30(30mbar)	<input type="checkbox"/>	<input type="checkbox"/>
GAZ NAT=		<input type="checkbox"/> G20(20mbar)	<input type="checkbox"/> G20(25mbar)	<input type="checkbox"/> G25(20mbar)	<input type="checkbox"/> G25(25mbar)	<input type="checkbox"/>	<input type="checkbox"/>										
GAZ PROPANE=		<input type="checkbox"/> G31(30mbar)	<input type="checkbox"/> G31(37mbar)	<input type="checkbox"/> G31(50mbar)	<input type="checkbox"/> G30(30mbar)	<input type="checkbox"/>	<input type="checkbox"/>										
Modele : <input style="width: 150px;" type="text"/>	<table border="1" style="width: 100%; border-collapse: collapse;"> <tr> <td style="width: 10%;"></td> <td style="width: 10%;">DE</td> <td style="width: 10%;">BE</td> <td style="width: 10%;">FR</td> <td style="width: 10%;">ES</td> <td style="width: 10%;">PT-GB</td> <td style="width: 10%;">DK-FI-SE-NO</td> <td style="width: 10%;"></td> </tr> <tr> <td style="text-align: center; vertical-align: middle;">Cat.:</td> <td></td> <td></td> <td></td> <td></td> <td></td> <td></td> <td></td> </tr> </table>		DE	BE	FR	ES	PT-GB	DK-FI-SE-NO		Cat.:							
	DE	BE	FR	ES	PT-GB	DK-FI-SE-NO											
Cat.:																	
U : <input style="width: 30px;" type="text"/> 230 V – 50 Hz U : <input style="width: 30px;" type="text"/> 400 V – 50 Hz CE <input style="width: 100px;" type="text"/>																	
ATTENTION / Ce colis voyage aux risques et périls du destinataire – le : / / le DEBALLER et le VERIFIER avant de signer le récépissé MADE IN FRANCE																	

CET EMBALLAGE DOIT ETRE ELIMINE
SUIVANT LES REGLEMENTATIONS EN
VIGUEUR.

THIS PACKAGE MUST BE ELIMINATED
FOLLOWING THE REGULATIONS IN
FORCE.

1.4. POSITION OF THE THERMOCOUPLE & PILOT LIGHT



2. INSTALLATION

- The device must be installed in accordance with regulations and standards, in an adequately ventilated .
This work are at the client cost, that he needs to have done by are a agreed company, near the position that the rotisserie is to be enforce them,by companies.
- The new air flow require for the combustion is : : 2 m³/h par kW of the calorifique flow.
- Do not cover the hearth plate (on the top of the rotisserie) and vents.
- Not forget to unplug the rotisserie before any intervention

2.1. SETTING UP

2.1.1. UNPACKING

Unpack the rotisserie that is circled, filmed and fixed on palette.

2.1.2. INSTALLING THE UNIT NEXT TO WALLS AND APPLIANCES

The front of the unit must be at a minimum distance 800 mm from the adjacent walls.

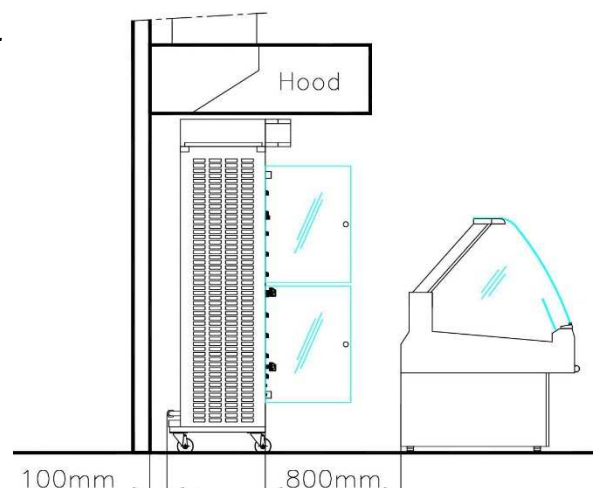
2.1.3. APPLIANCE EQUIPPED WITH WHEELS

The device must be moved by two people minimum and placed on a perfectly horizontal floor then locked in stationary position for use and storage.

2.1.4. ENVIRONNEMENT

The device should not be installed near the steam,grease (frying,...), projections of water, high températures or other adverse condition.

INDOOR INSTALLATION OR OPEN KITCHEN



All this information are the property of Rotisol.

Reproduction partial or in totality are prohibited without authority prior written of company Rotisol.

2.2. GAS CONNECTION

Connect the unit to the pipeline gas supply valve by interposing a barrier to isolate the unit from the rest of the installation.

The gas supply pipe will be sized to minimize losses power. It's diameter will be determined in function to it's route (length, number of bends etc...) and the total power rating of the unit.

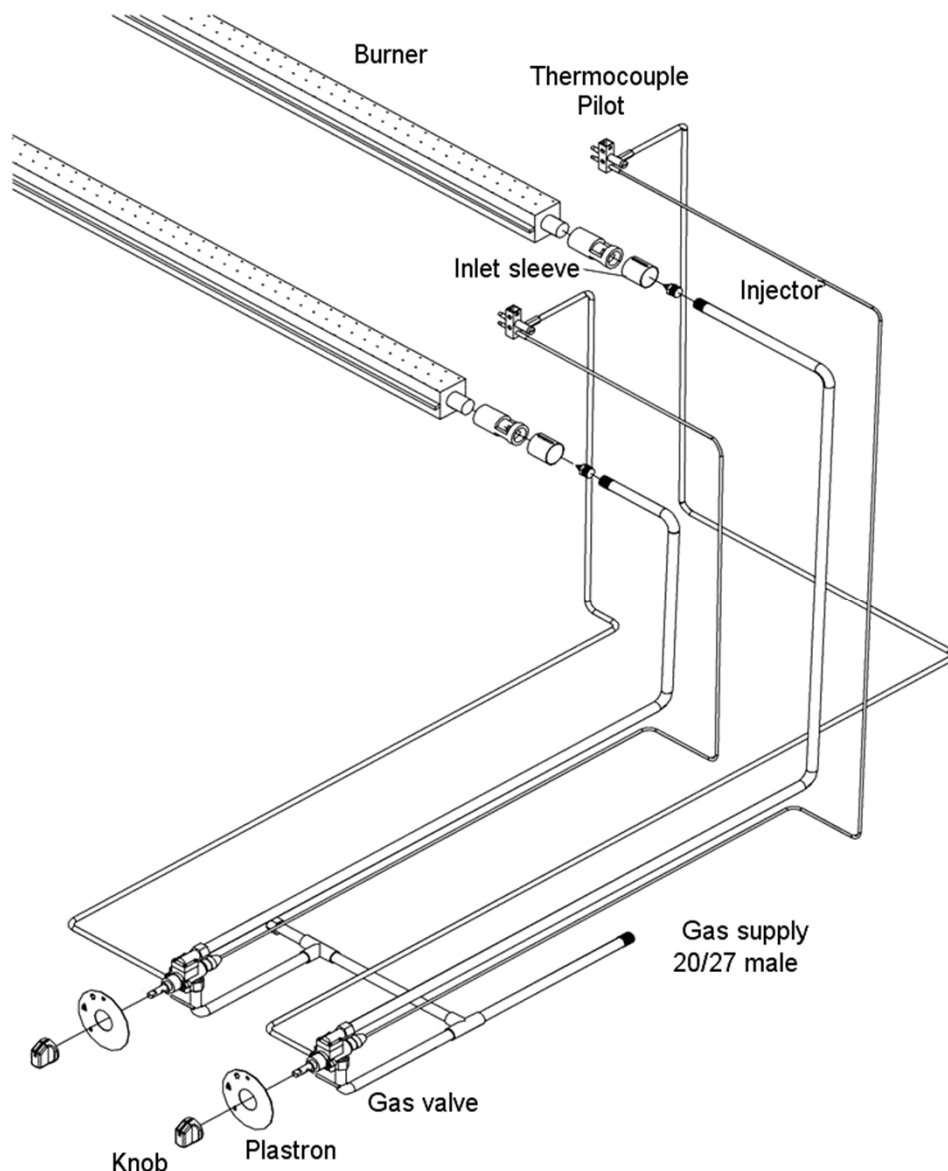
« **Check that the settings of the unit correspond to the nature and pressure of the gas at the premises.**

In order to check the pressure of the unit, you just need to attached a manometer to the water gage at the gas inlet on the rear of the unit, with all the burners on full.

The pressure measured should be the same as that indicated on the gas label, stuck to the unit.

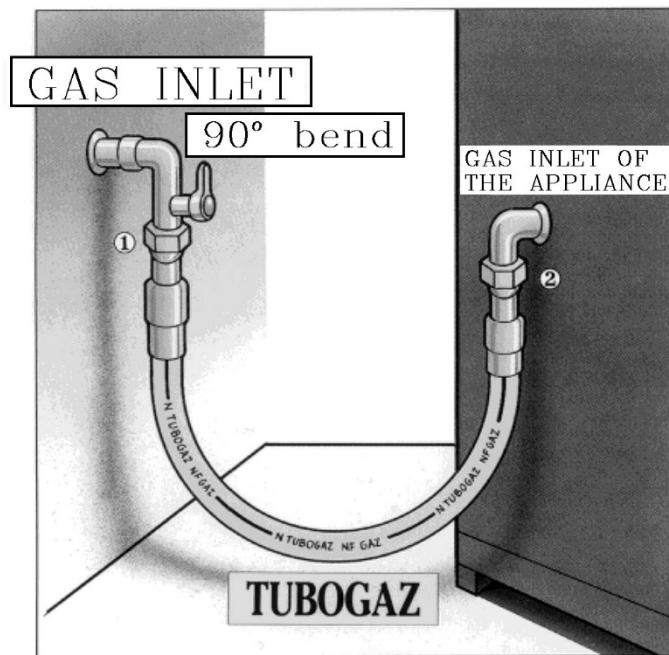
The gas supply valves require no rotisserie set-up during their lifetime.

GAS CIRCUIT



2.3. FIXED INSTALATION – MOBILE INSTALATION

FIXED



Connection type union 1 or 2

The use of **TURBOGAZ** or **similar** in professional fixed instalations, will permit a total liberty in the conception of the kitchen.

MOBILE

The conception of a kitchen with mobile gas appliance is possible thanks to a tandem of TURBOGAZ – TUSHGAZ or SIMILAR.

FLEXIBLE PIPING IN THE SHAPE OF U

Measure of the gas flow under 20 mbar in kW/h PCI (natural gas)

	Ø 1/2" R* = 90 mm		Ø 3/4" R* = 110 mm		Ø 1" R* = 130 mm	
	Without PUSHGAZ	With PUSHGAZ	Without PUSHGAZ	With PUSHGAZ	Without PUSHGAZ	With PUSHGAZ
0,50 m	25,3	21,5	93,6	80,6	186,2	129,4
0,75 m	21,6	19,0	81,7	69,4	160,9	120,3
1,00 m	19,4	17,5	76,8	67,9	144,9	116,4
1,25 m	18,2	16,5	71,0	64,0	131,8	106,4
1,50 m	17,0	15,7	66,5	60,2	120,3	98,8
2,00 m	14,2	13,2	58,8	54,9	107,2	93,0

*R = minimum bend radius of hose

These flow are given for conditions of reference, note

: Temperature 15°C

: Atmospheric pressure : 1013 mbar

: Dry air

- The hose must not touch a hot wall
- For safety, please install a shorter cable or chain than the gas pipe between the rotisserie and a fixed wall.

All this information are the property of Rotisol.

Reproduction partial or in totality are prohibited without authority prior written of company Rotisol.

2.4. ELECTRICAL CONNECTION

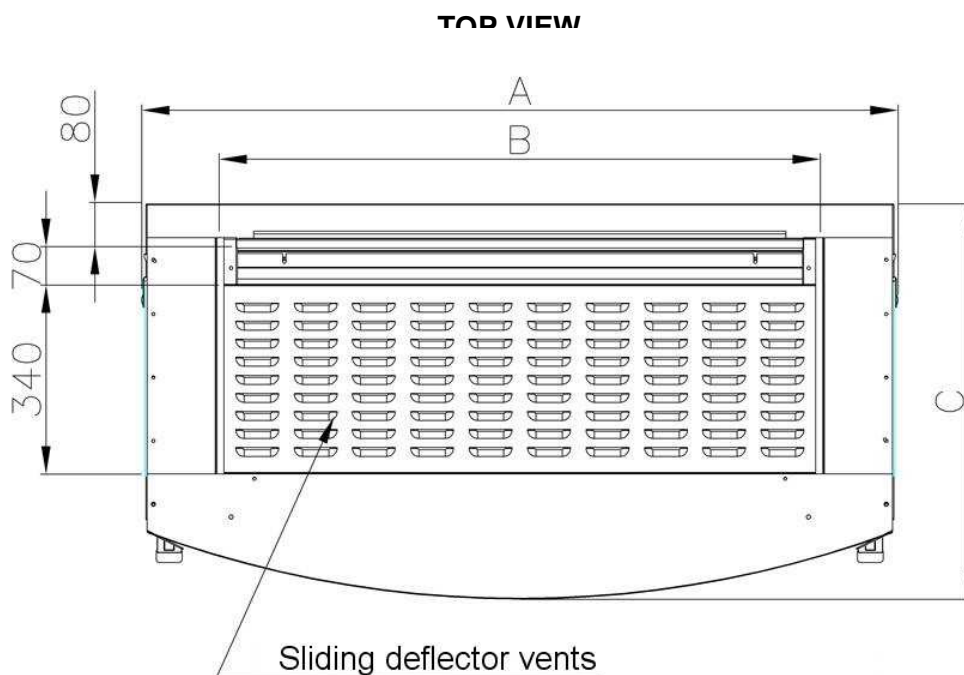
Check that there is no errors with **CONNECTION**.

- Electrical rating : 230V~50Hz.
- Check that the installed power corresponds with the characteristics on the signal plate at the rear of the unit.

IN ALL CASES , CONNECT THE EARTH WIRE
THE UNIT IS DELIVERED IN MONOPHASE + EARTH

2.5. EVACUATION - SMOKE TYPE : A

- The unit is destined to be installed under an extraction system with ventilation
- A heat delector with holes is placed above the rotisserie, on the opening of the cap, with gills upwardly and rearwardly directed.



Reference	Measurement A (mm)	Measurement B (mm)	Measurement C (mm)
1375-6OLG	1365	1085	712
975-6OLG	965	685	712
1375-4OLG	1365	1085	702
975-4OLG	965	685	702
975-2OLG	965	685	702

3. ADAPTING THE UNIT WHEN PASSING GAS TO ANOTHER

3.1. ADJUSTING THE MACHINE

The device is automatically set at the factory depending on the gas requested the order.

3.1.1. CATEGORIES OF GAS – COUNTRY OF DESTINATION

This device is designed to work with categories, gas and pressure data in the
Next, for each country of destination.

COUNTRIES	CATEGORIES	GAS	PRESSIONS (mbar)
FR-BE	I12E+3P	G20/G25	20/25
		G31	37
		G31	50
ES	I12E+3P	G20	20
		G31	37
		G31	50
CH-DK-GB-GR- IE-IT-LU-NO- NL-PT-SE-FI	I12H3P	G20	20
		G31	37
		G31	50
DE	I2E	G20	20
	I3P	G31	50

3.1.2. CASE OF BELGIUM AND GERMANY

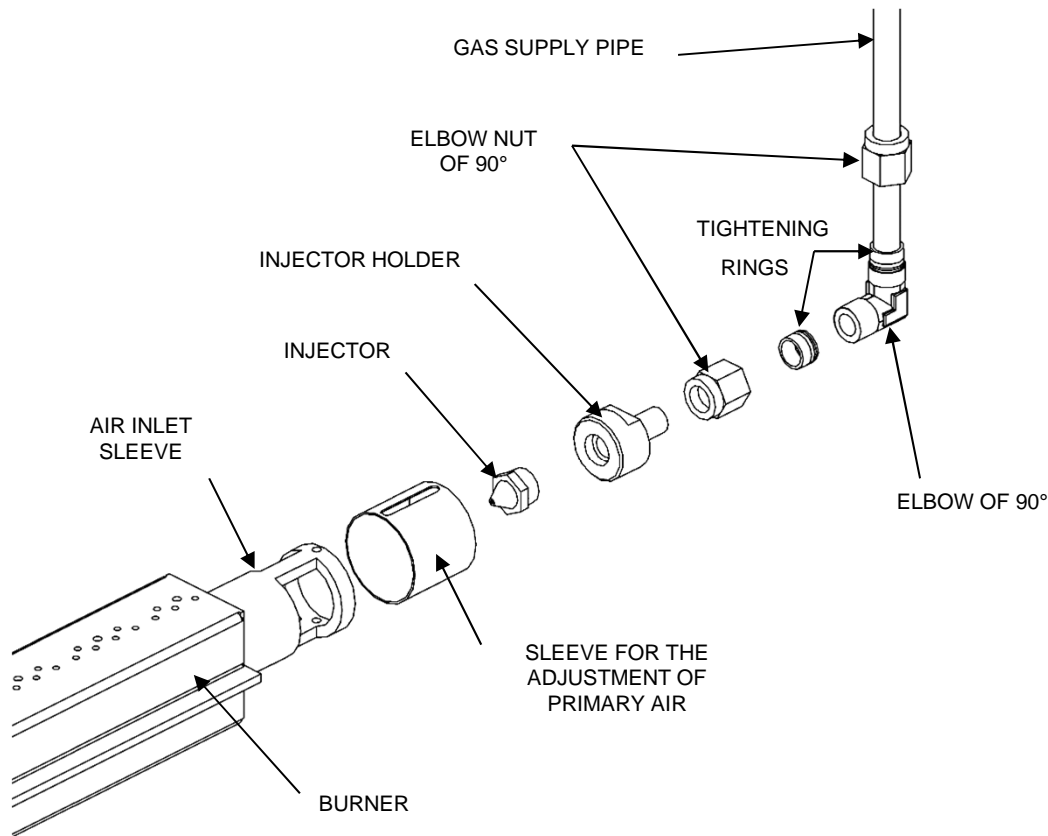
The device is class, it will be appropriate only under the responsibility of the manufacturer.

3.1.3. OTHER CASES

In case of change gas, it is necessary to adapt the operation of the device to new gas, by simply changing:

- _ injectors
- _ the pilot adjustment
- _ the setting of low flow
- _ the idle adjustment
- _ setting the primary air
- _ of the label control gas, to stick on the device

3.2. INJECTOR CHANGE



3.2.1. REMOVAL OF THE INJECTOR

- _ Remove the outer panel of the right amount
- _ Loosen the nut 90° elbow on the gas supply pipe from the tap to the burner
- _ Remove the ring of air.
- _ Remove the whole, 90° elbow, injector holder and injector, by removing completely the together
- _ Unscrew and remove the injector by blocking the injector holder with a key.

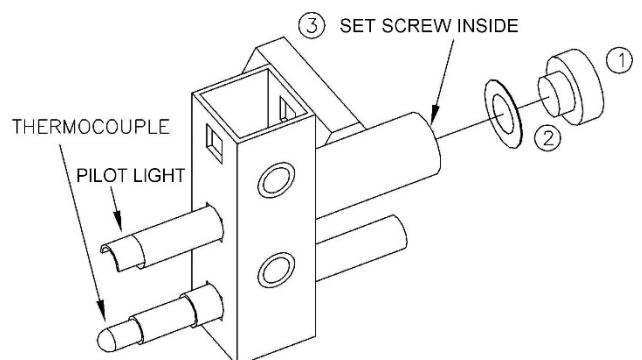
3.2.2. ASSEMBLY INJECTOR

- _ Screw the injector bottom (without forcing) on the injector holder with a key.
- _ Up overall, 90° elbow, injector holder.
- _ Adjust the position of the ring of air
- _ Tighten the nut 90° elbow on the gas supply pipe.
- _ Make a complete leak test of the entire gas system.
- _ Replace the outer panel.

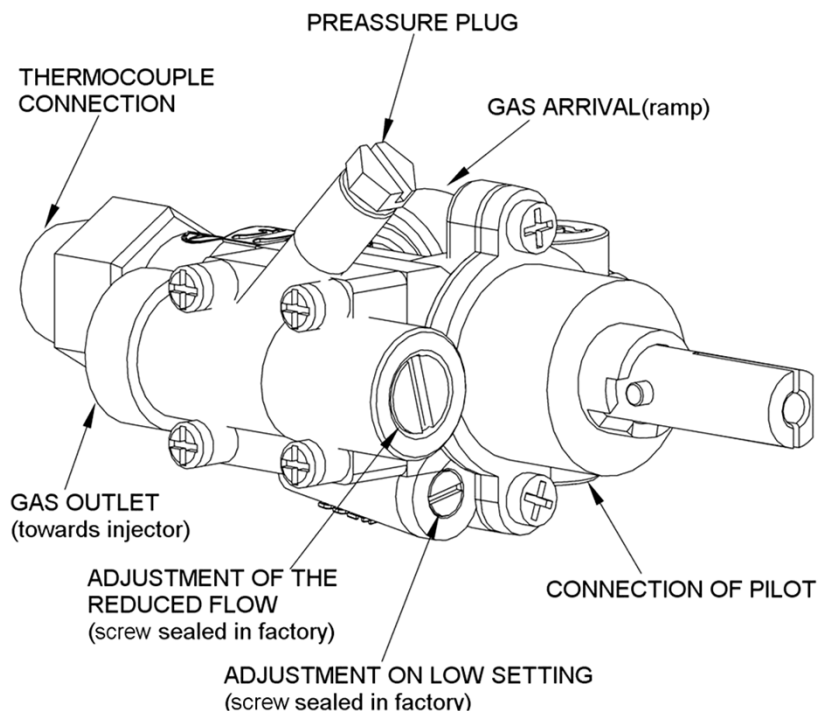
3.3. ADJUSTMENT OF THE PILOT

- _ Unscrew and remove the cap and remove the washer 2.
- _ For natural gas (G20 and G25), unscrew only 1 / 4 turn the set screw 3 and check that the flame heating the thermocouple correctly.
- _ For propane (G31), screw down the set screw but without the block:

SEAL ADJUSTMENT



3.4. REDUCED FLOW ADJUSTMENT AND SLOW ON THE GAS VALVE



3.4.1. ADJUSTMENT OF REDUCED FLOW

Connect a manometer on the pressure plug and adjust to the pressure required (see table of : categories of gas, chapter 3.1.1) with the aide of the reduced flow screw:

SEAL THE ADJUSTMENT.

3.4.2. ADJUSTMENT OF LOW SETTING

Put the tap to the « minimum » setting.

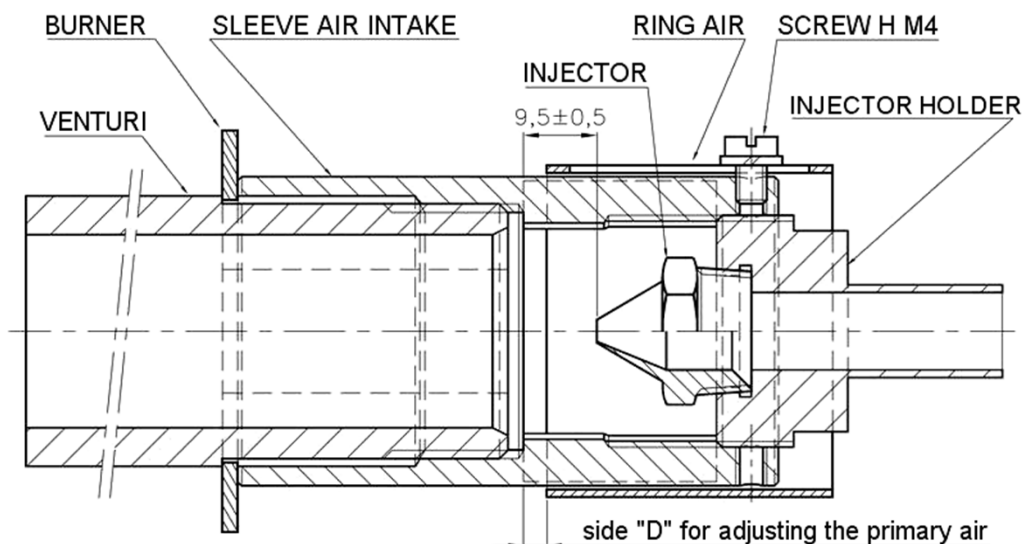
Connect a manometer on the preasure plug and adjust the pressure to that require (see table for adjustment of burner, chapter 3.7) with the aide of the low setting screw.

SEAL THE ADJUSTMENT

3.5. AIR ADJUSTMENT

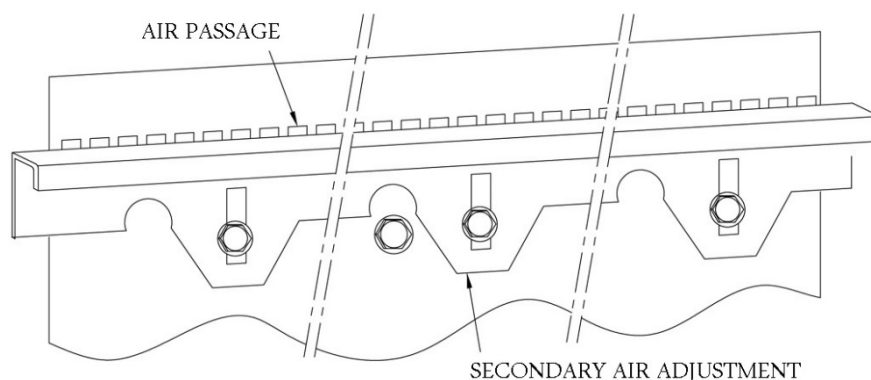
3.5.1. SETTING THE PRIMARY AIR

Just adjust the opening of the ring of air depending on the gas used.



3.5.2. SECONDARY AIR ADJUSTMENT

Adjustment performed by an air cover plate.



3.6. TABLE SETTING OF A BURNER

MODEL	SPECIFICATION	G20 under 20 mbar	G25 under 25 mbar	G31 under 37 mbar	G31 under 50 mbar
975 OLG	Heat output in kW	10	10	10	10
	Bookmark injector	240	240	165	150
	Injector diameter in mm	2,4	2,4	1,65	1,5
	* Open the primary air dimension « D » in mm	2,5	2,5	5	4
	volume flow in m³/h	1,06	1,23	-	-
	mass flow in kg/h	-	-	0,776	0,776
	Reduced heat output in kW	5	5	5	5
	Pressure tap reduced Flow in mbar	5	6,5	9,5	12,5
1375 OLG	Heat output in kW	15	15	15	15
	Bookmark injector	290	290	200	180
	Injector diameter in mm	2,9	2,9	2	1,8
	* Open the primary air dimension « D » in mm	2,5	2,5	5	4
	volume flow in m³/h	1,59	1,85	-	-
	mass flow in kg/h	-	-	1,16	1,16
	Reduced heat output in kW	7,5	7,5	7,5	7,5
	Pressure tap reduced Flow in mbar	5	6,5	9,5	12,5

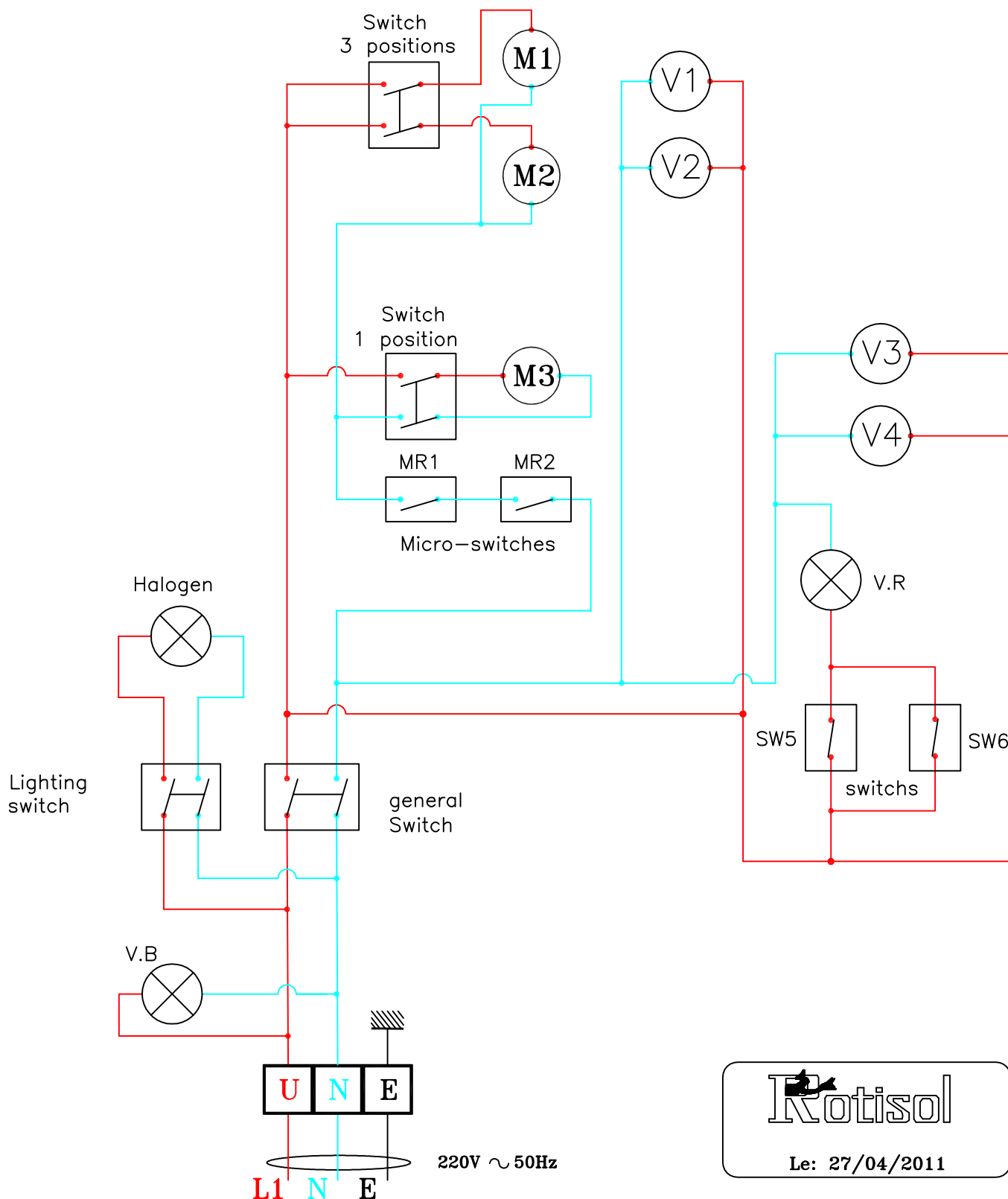
* Open primary air: see position of the adjusting ring primary chapter 3.5.

3.7. LABEL SETTING

The label indicating the setting of gas to the appliance must be attached to it (see marking mandatory, Chapter 1.3.1.).

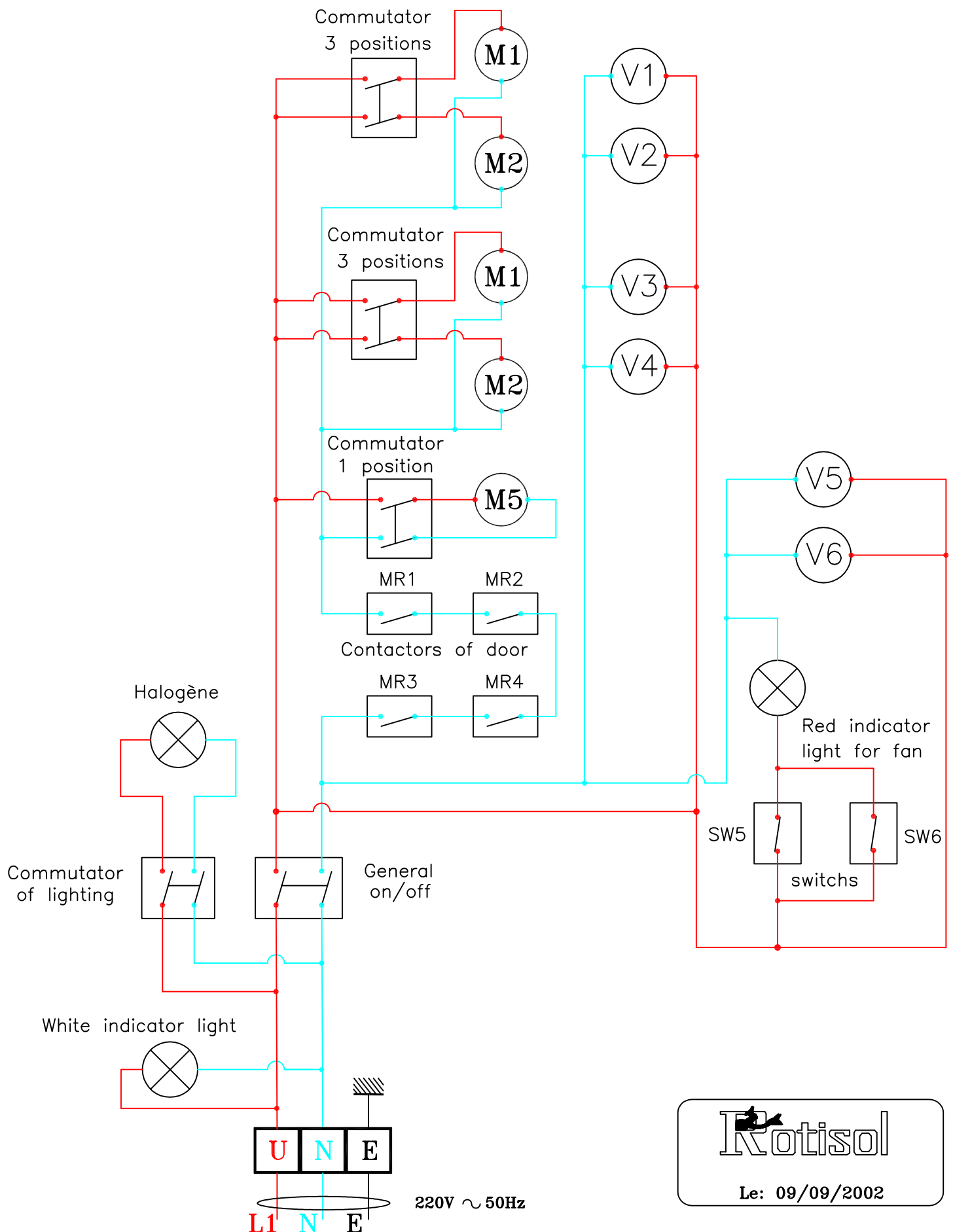
In case of change of gas, the new label is provided with the new injectors.

CIRCUIT DIAGRAM OF THE ROTISSERIE GRANDES FLAMMES "OLYMPIA" GAS Ref.: 975-20LG



Rotisol
Le: 27/04/2011

CIRCUIT DIAGRAM OF ROTISSERIE GRANDES FLAMMES "OLYMPIA" GAS Re.: 1375-40LG AND 975-40LG

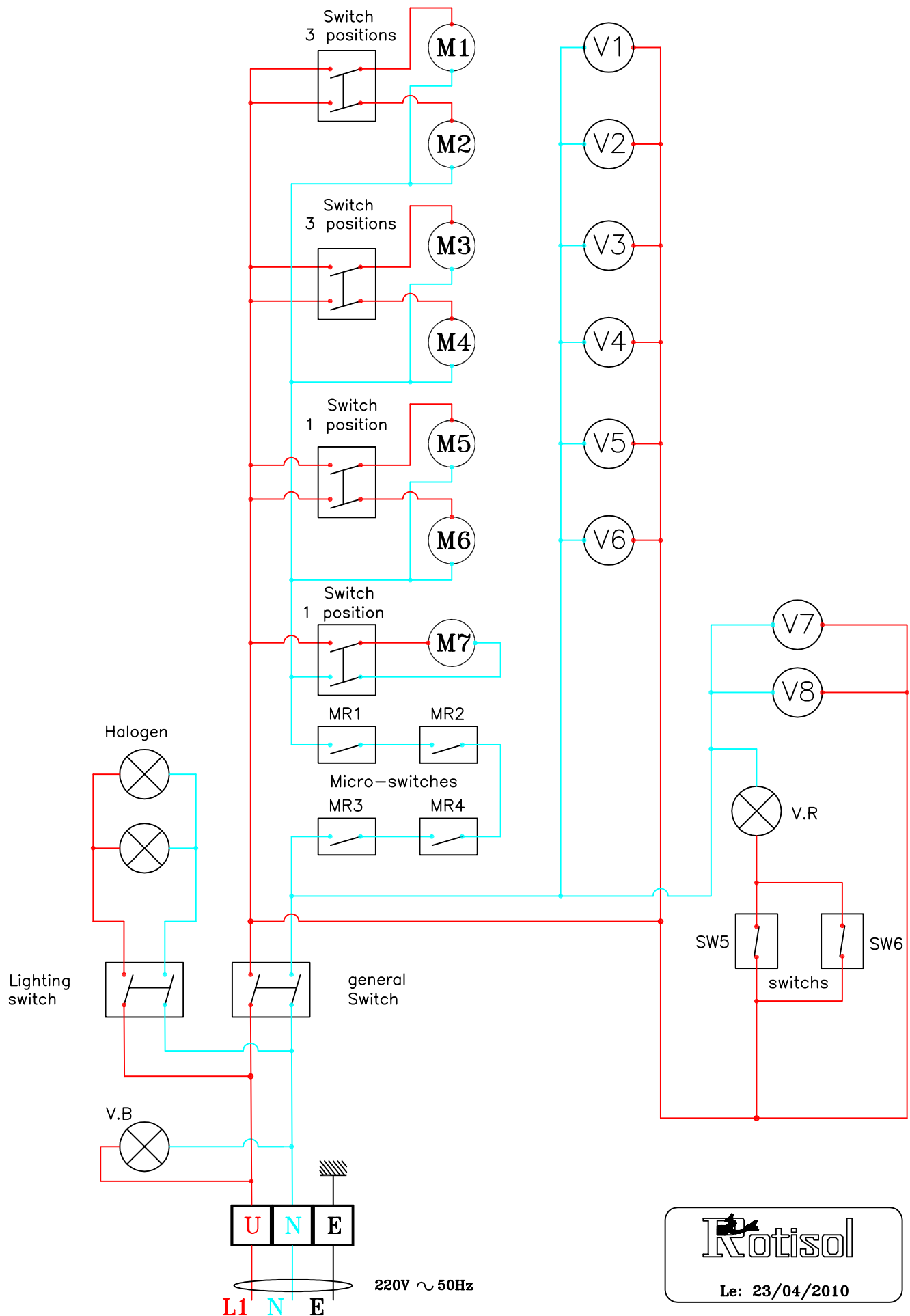


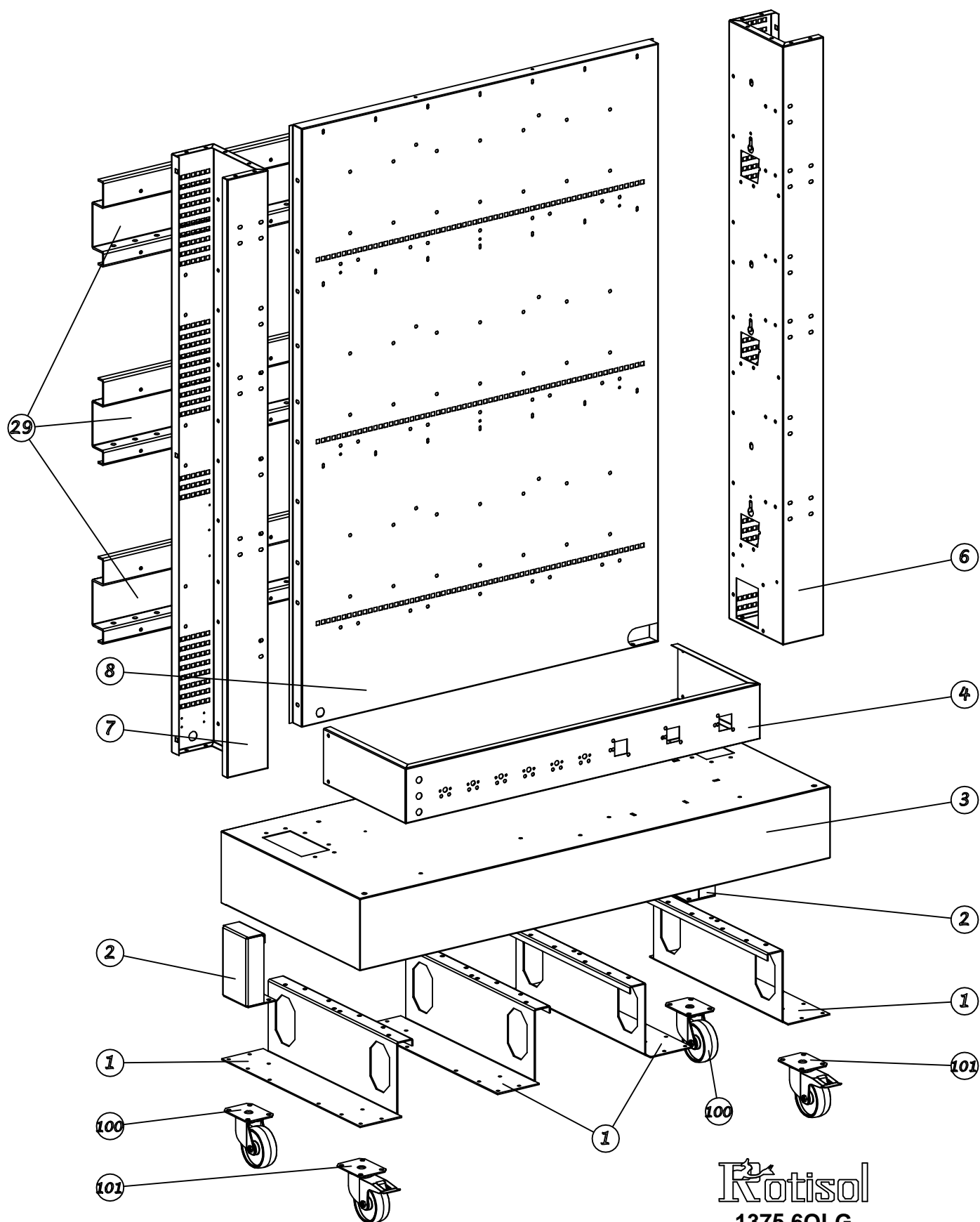
Rotisol
Le: 09/09/2002

N° SENG4GEA

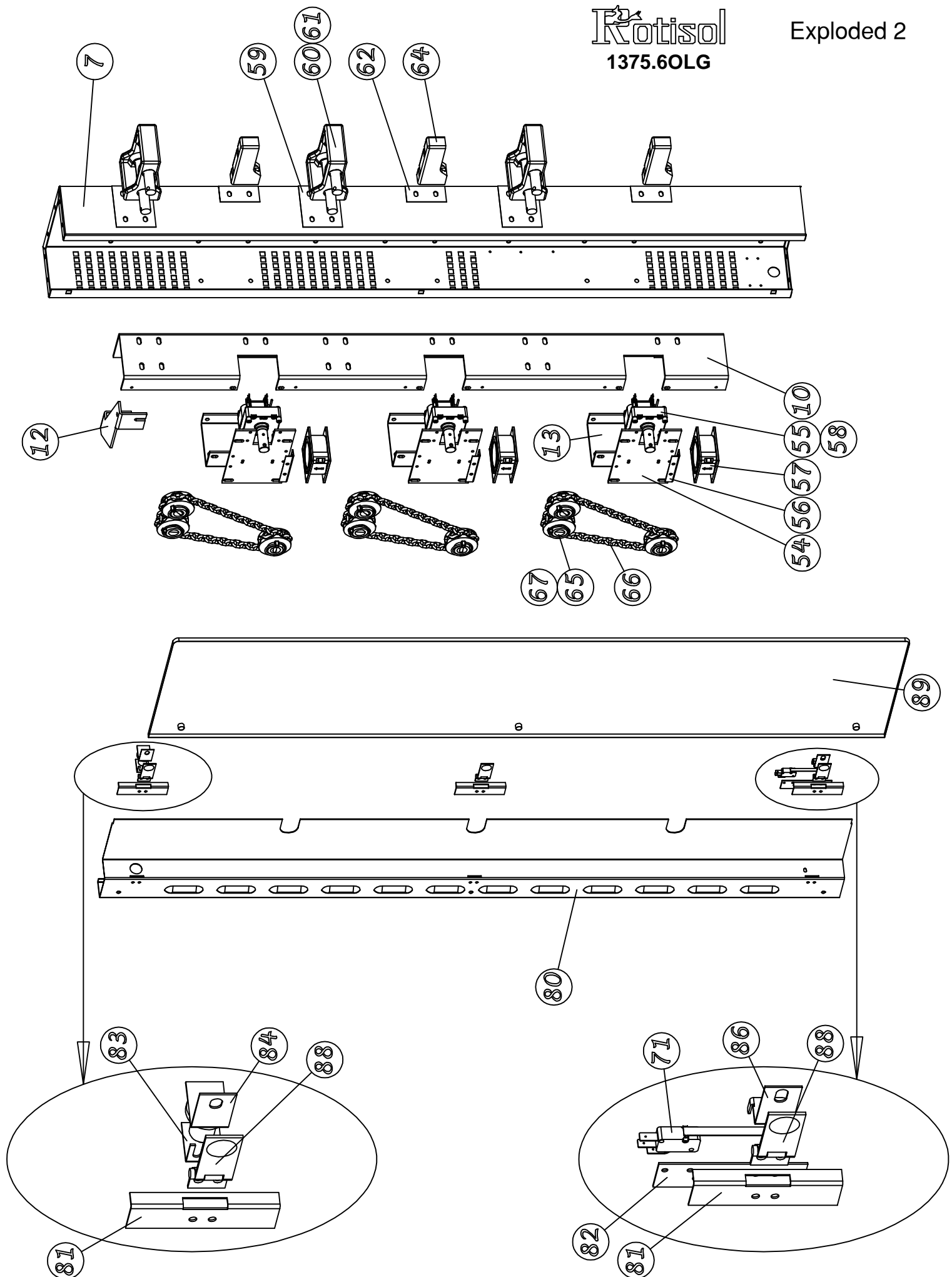
CIRCUIT DIAGRAM OF THE ROTISSERIE GRANDES FLAMMES "OLYMPIA" GAS

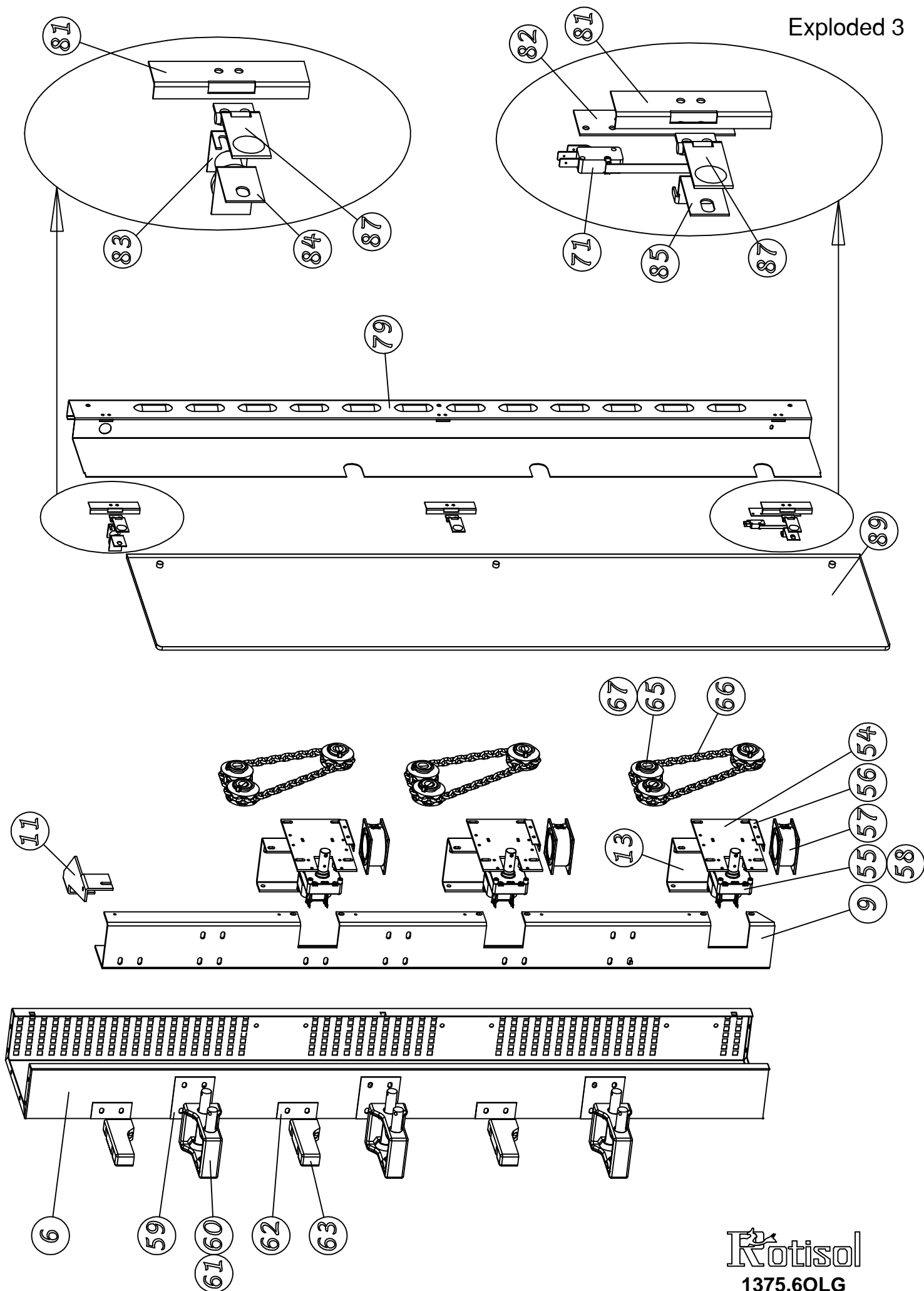
Ref.: 1375-60LG AND 975-60LG



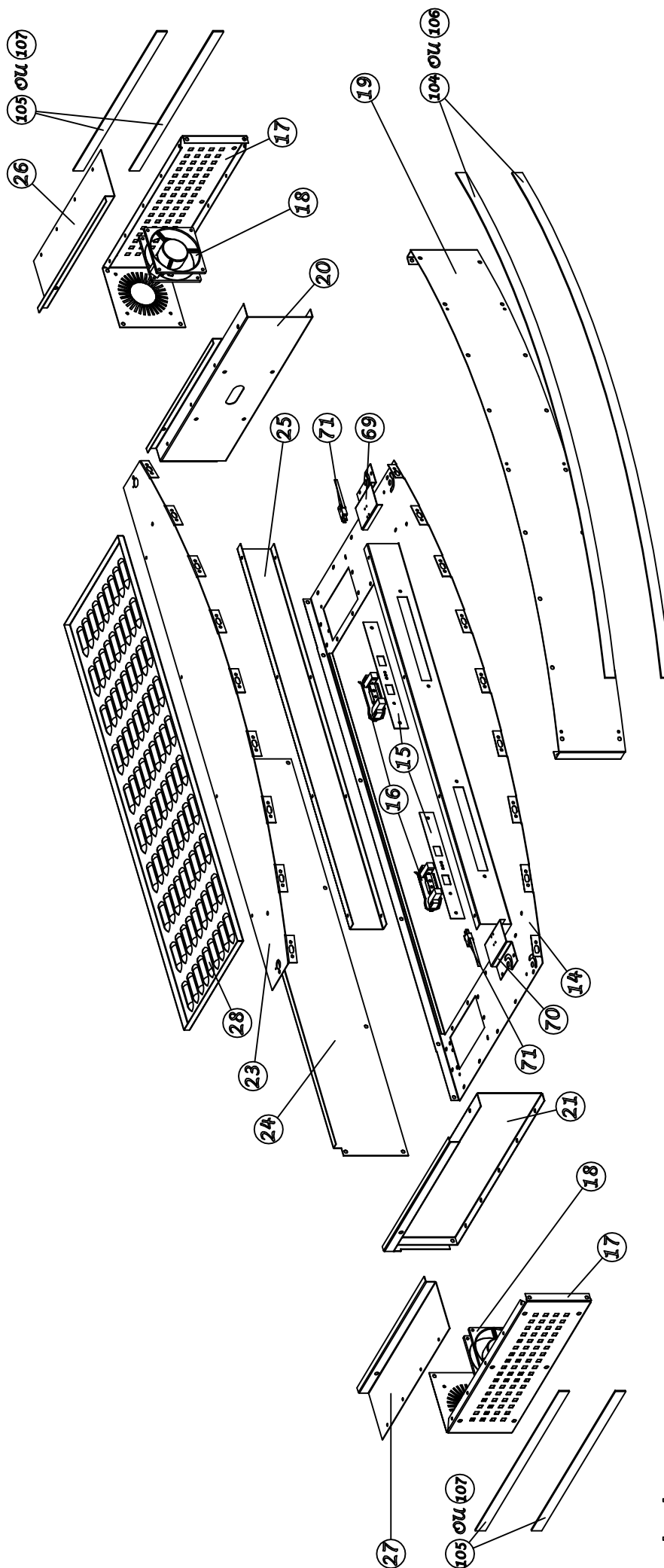


Rotisol
1375.60LG



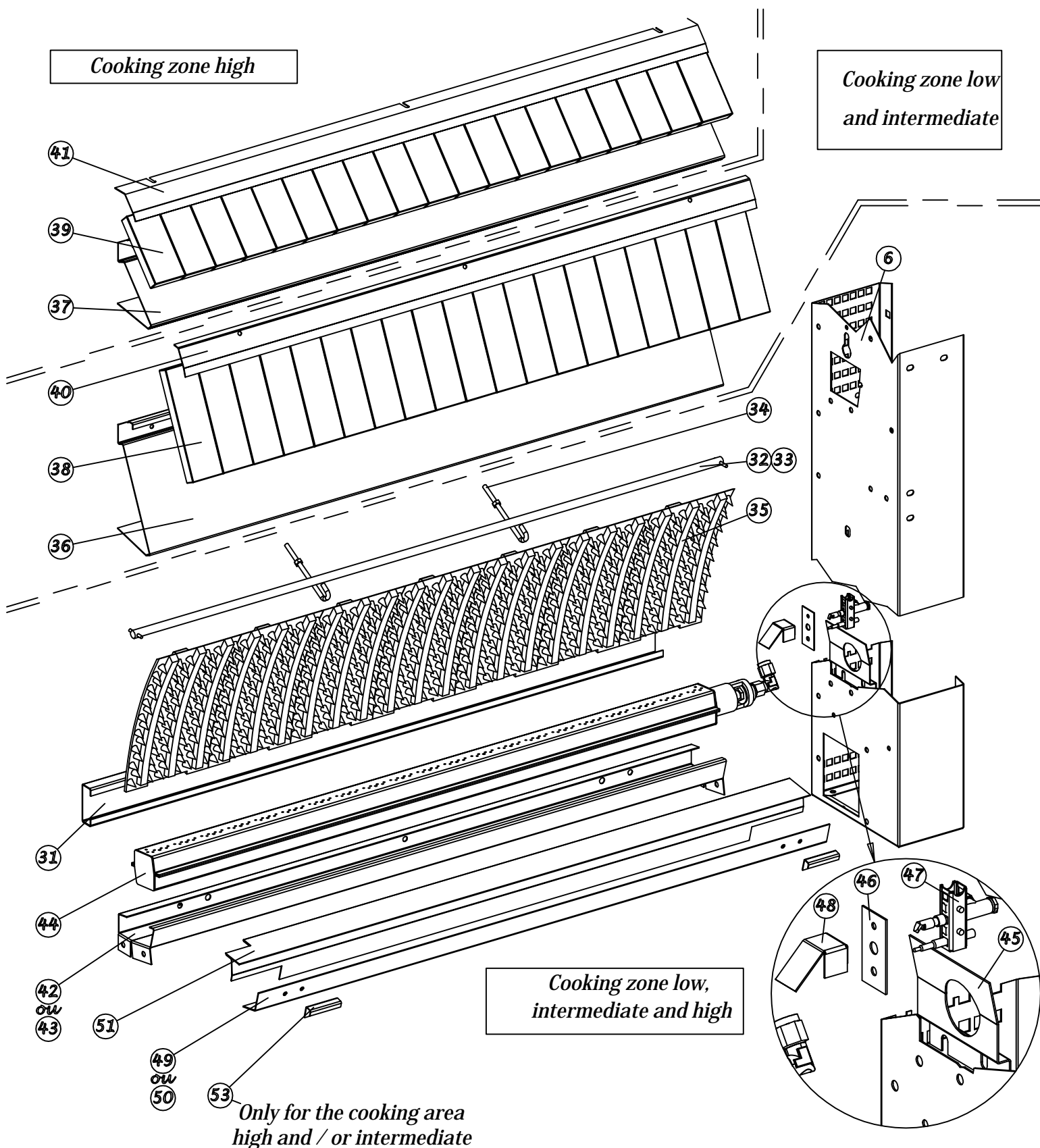


Rotisol
1375.60LG

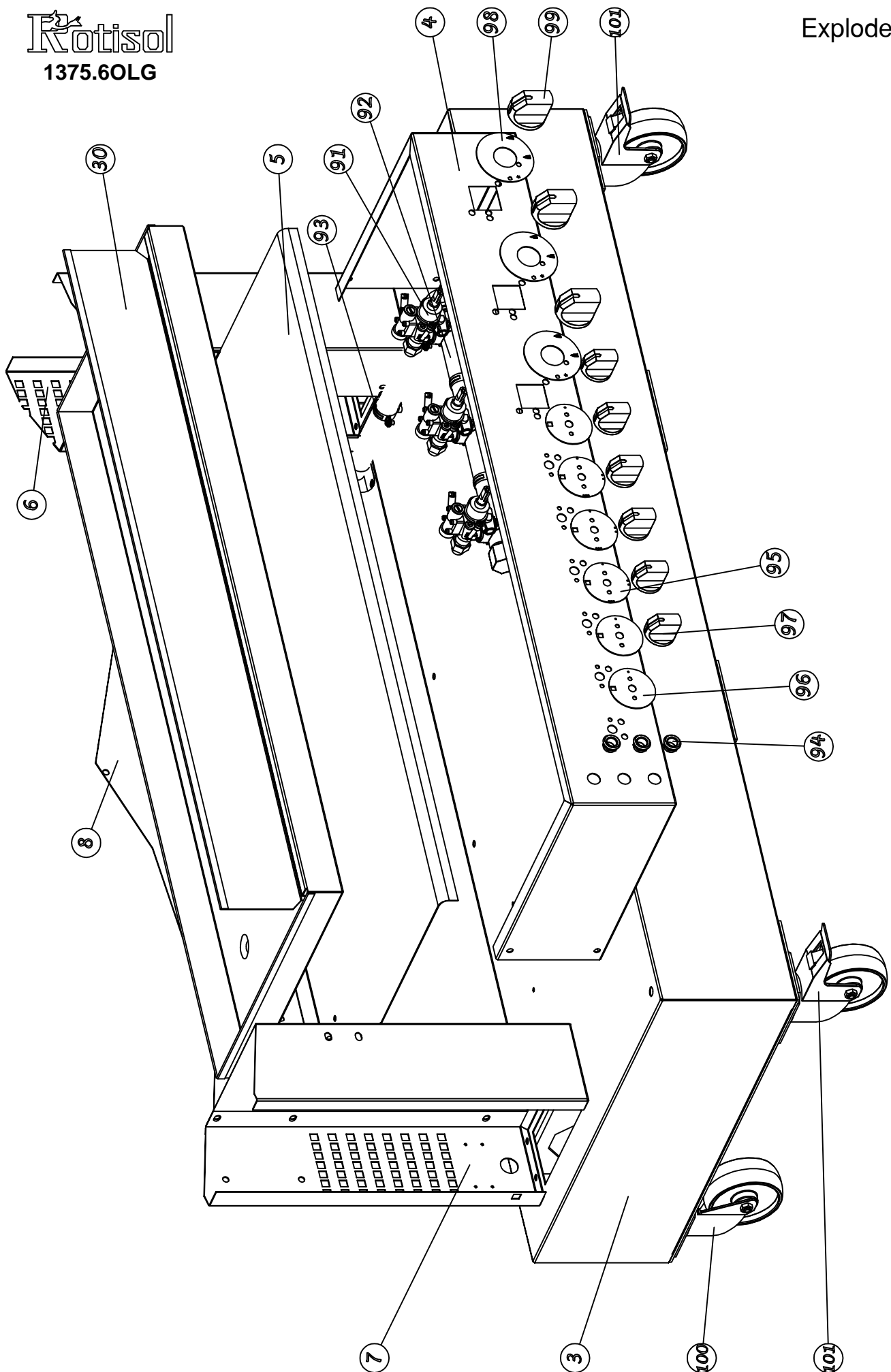


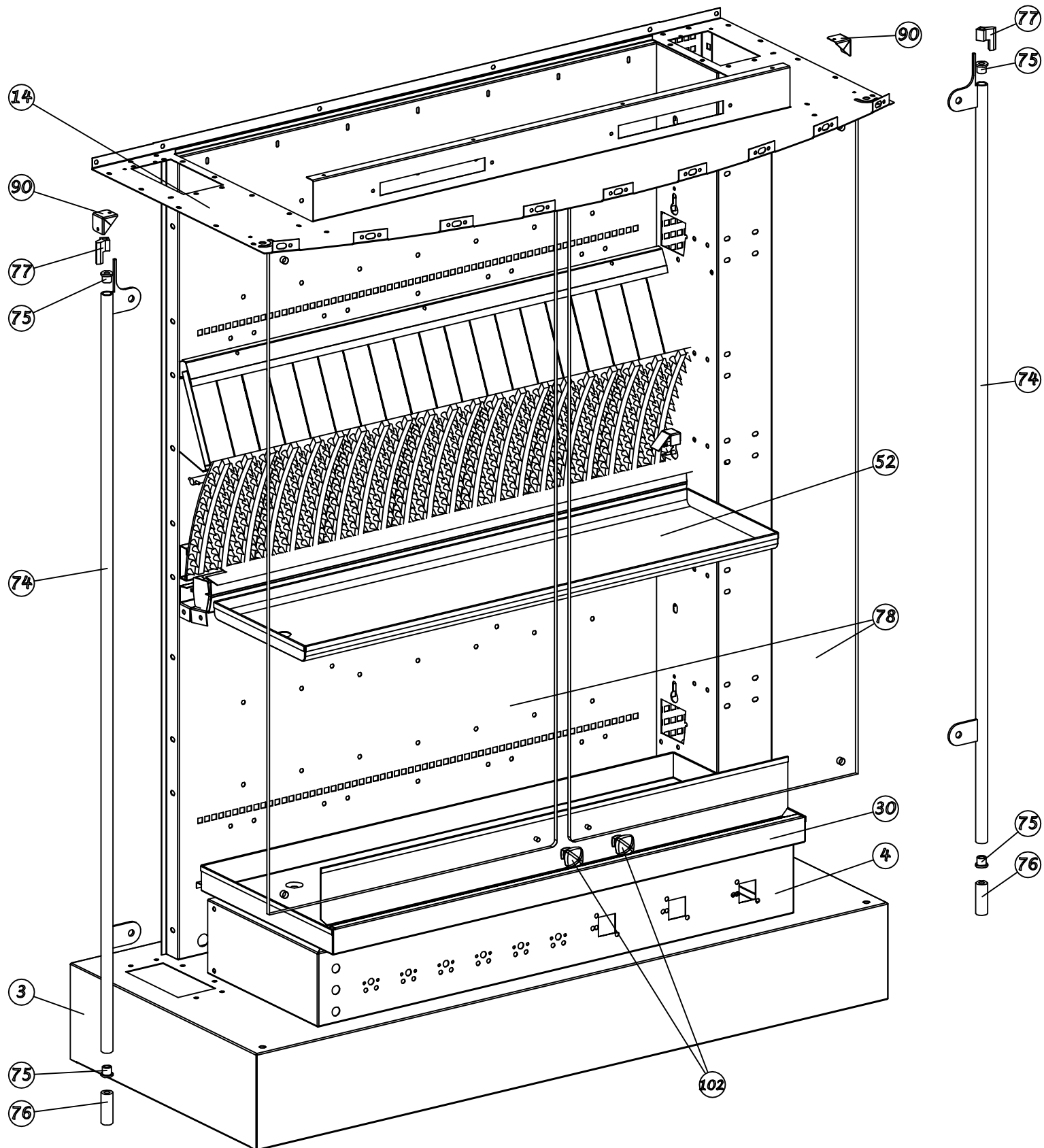
Cooking zone high

*Cooking zone low
and intermediate*



Rotisol
1375.6OLG





Kotisol
1375.6OLG

NOMENCLATURE 1375.6OLG

REP	DESIGNATION	QTE	REFERENCE	MODEL
1	SUPPORT CASTER	2	1350NGF60102	1375.6OLG
2	TABLE STIFFENER	2	1350NGF60112	OLYMPIA 6 SPITS
3	TABLE	1	1350NGF60203	1375.6OLG
4	SCHEDULE	1	1350NGF60303	1375.6OLG
5	COVERS CONTROLLER	1	1350CHC0101	OLYMPIA 1375
6	RIGHT AMOUNT	1	1350NGF60401	1375.6OLG
7	LEFT AMOUNT	1	1350NGF60501	1375.6OLG
8	BOTTOM	1	1350NGF60602	1375.6OLG
9	STIFFENER RIGHT AMOUNT	1	1350NGF60701	1375.6OLG
10	STIFFENER LEFT AMOUNT	1	1350NGF60801	1375.6OLG
11	REINFORCEMENT RIGHT AMOUNT STIFFENER	1	1350NGF60901	1375.6OLG
12	REINFORCEMENT AMOUNT LEFT STIFFENER	1	1350NGF61001	1375.6OLG
13	REAR ENGINE MOUNTING BRACKET	6	1350NGF61101	1375.6OLG
14	ABOVE AMOUNT	1	1350NGF61201	1375.6OLG
15	PLATE TRAP	2	PTVC	VITRINE ; ROTISSERIE
16	HALOGEN SUPPORT + BULB	2	SUPR7S78+(LA78NM ou LA150119)	VITRINE ; ROTISSERIE
17	EXTERIOR ROOF	2	1350NGF61301	1375.6OLG
18	FAN - 118X118X35MM	2	VEN4E230S	VARIOUS
19	FRONT CAP	1	1350NGF61402	1375.6OLG
20	TOP RIGHT AMOUNT	1	1350NGF61501	1375.6OLG
21	TOP LEFT AMOUNT	1	1350NGF61601	1375.6OLG
22	GAUGE POINT RIGHT / LEFT	1	NGF6GAB0101	OLYMPIA
23	HALOGEN TOP	1	1350NGF61701	1375.6OLG
24	TOP BOTTOM	1	1350NGF61801	1375.6OLG
25	HALOGEN TRAP	1	1350NGF61901	1375.6OLG
26	TOP RIGHT ROOF	1	1350NGF62001	1375.6OLG
27	TOP LEFT ROOF	1	1350NGF62101	1375.6OLG
28	A INLET DEFLECTOR TOP	1	DES104	ROTISSERIE
29	STIFFENER BOTTOM	3	1350NGF62201	1375.6OLG
30	FLAT	1	DRIP13	1375.6OLG
31	SUPPORT PLATE CAST IRON	3	1350SUPLF0101	OLYMPIA 1375
32	ROD IRON PLATE	3	1350BRPLF0101	OLYMPIA 1375
33	SPIRAL PIN 4x30	6	GOUSM430	VARIOUS
34	ROD HOOK LOCK PIN	6	TIGE123	OLYMPIA
35	CAST IRON PLATE TO PIN	21	PLPICOT5167	OLYMPIA
36	SUPPORT BRICK DOWN	2	1350SUPBRI0102	1375.6OLG
37	SUPPORT BRICK TOP	1	1350SUPBRI0201	1375.6OLG
38	BRICK DOWN	38	BRI1705415	ROTISSERIE
39	BRICK TOP	19	BRI1105415	ROTISSERIE
40	LOCK DOWN BRICK	2	1350BLBRI0102	OLYMPIA 1375
41	LOCK UP BRICK	1	1350BLBRI0201	OLYMPIA 1375
42	BURNER SUPPORT	2	1350SUPBRU0102	OLYMPIA 1375
43	SUPPORT FOR LOCKING PLATE BURNER	1	1350SUPBRU0201	OLYMPIA 1375
44	BURNER	3	BRU1350	NM2008
45	CACHE VENTURE	3	CHVENT0101	OLYMPIA
46	PILOT SUPPORT France	3	SUPVEILFR0101	OLYMPIA
47	ALL PILOT FIRE + 1 THERMOCOUPLE 1096/600 M9	3	AV1092A	OLYMPIA
48	PROTECTION PILOT	3	PROTEVEILL0101	OLYMPIA
49	BURNER SUPPORT COVER WITH MOUNTING PLATE	1	1350SUPCHBRU0101	OLYMPIA 1375
50	CACHE BURNER SUPPORT WITHOUT FIXING FLAT	2	1350SUPCHBRU0201	OLYMPIA 1375
51	COVER BURNER	3	PROTBR1350	OLYMPIA 1375-1350
52	FLAT GREASE	1	DRIP13	OLYMPIA 1375
53	FLAT BLOCK GREASE	2	BLPL0101	OLYMPIA
54	MOTOR CARRIER	6	SUPMOTOLYMP0101	OLYMPIA
55	SPIT MOTOR	6	MOTOLYMP	ROTISSERIE
56	FAN SUPPORT SPIT MOTOR	6	SUPVENTMOT0101	OLYMPIA
57	FAN - 80X80X38MM	6	VENVIT	VARIOUS
58	OUTPUT AXIS ENGINE	6	AXE60618B	OLYMPIA
59	59 BRASS SUPPORT BRACE SPIT	6	RENFLAITON0101	OLYMPIA
60	SUPPORT SPIT DRIVE	6	SUPENT5164	OLYMPIA
61	SUPPORT SHAFT DRIVE SPIT	12	AXEEH12B	OLYMPIA
62	BRASS SUPPORT BRACE SPIT	6	RENFLAITON0201	OLYMPIA
63	SUPPORT SPIT RIGHT	3	SUPBRO5165	OLYMPIA
64	SUPPORT SPIT LEFT	3	SUPBRO5165G	OLYMPIA
65	PULLEY	18	POULMOT	OLYMPIA
66	CHAIN	6	CHI1565	OLYMPIA
67	PIN	18	CLIP6	OLYMPIA
68	GF ENGINE ON TRACK FOR SYSTEM TWINE	1	MOTOLYMP	ROTISSERIE
69	SUPPORT CONTACT RIGHT FRONT DOOR	1	SUPCONTACTD0101	OLYMPIA
70	SUPPORT CONTACT LEFT FRONT DOOR	1	SUPCONTACTG0101	OLYMPIA
71	MICROSWITCH	4	MINI83161574	VARIOUS

All this information are the property of Rotisol.

Reproduction partial or in totality are prohibited without authority prior written of company Rotisol.

NOMENCLATURE 1375.6OLG

REP	DESIGNATION	QTE	REFERENCE	MODEL
72	SUPPORT UP CONTACT WITH FRONT GLASS	2	SUPGLC0101	OLYMPIA
73	GLASS DOWN FRONT SUPPORT	2	SUPGL0101	OLYMPIA
74	TRINGLERIE SUPPORT GLACE	2	AXESUPGL0101	1375.6OLG
75	LINKAGE SUPPORT GLASS	4	BC101616	VARIOUS
76	GLASS SUPPORT GUIDE	2	GS5383	OLYMPIA
77	LOCK OPEN GLASS	2	BOGOLYMP	OLYMPIA
78	GLASS RIGHT / LEFT FRONT	2	GL60681	1375.6OLG
79	OUTSIDE RIGHT AMOUNT OF	1	1350NGF62303	1375.6OLG
80	AMOUNT LEFT OUTSIDE	1	1350NGF62403	1375.6OLG
81	BRASS HINGE SUPPORT REINFORCEMENT	4	RENFLAITON0301	OLYMPIA
82	SUPPORT CONTACT SIDE DOOR	2	SUPCONTACTCOT0101	OLYMPIA
83	MAGNET SUPPORT SIDE DOOR	2	SUPAIMANT0101	OLYMPIA
84	STOP MAGNET	2	BUTAIMANT0101	OLYMPIA
85	STOP RIGHT DOOR CONTACT	1	BCPD0101	OLYMPIA
86	STOP LEFT DOOR CONTACT	1	BCPG0101	OLYMPIA
87	HINGE RIGHT SIDE	3	CHAOLYMPD	ROTISSERIE
88	HINGE LEFT SIDE	2	CHAOLYMPG	ROTISSERIE
89	GLASS RIGHT / LEFT SIDE	2	GL60863	OLYMPIA 6 SPITS
90	STOP GLASS	4	BUTGL0101	ROTISSERIE
91	GAS VALVE	3	ROBS22	ROTISSERIE
92	RAMP GAS	1	RAMP 1350NGF6	OLYMPIA 6 SPITS
93	ATLAS COLLAR Ø26	4	ATLAS26	VARIOUS
94	BRASS RING FOR ROUND LIGHT	3	BVRL1216	VARIOUS
95	FRONT DOUBLE SWITCH	3	PLASTRON 123	ROTISSERIE
96	SIMPLE SWITCHER CHEST	3	PLASTRON COMMANDE 1	ROTISSERIE
97	BUTTON SWITCH	6	BOUCOM5214	ROTISSERIE
98	PLASTRON THROTTLE	3	PLASMAGAZ	ROTISSERIE
99	GAS TAP KNOB MANOEUVRE	3	BOUROB5211	ROTISSERIE
100	BRAKE WITHOUT CASTER	2	ROU100-1	ROTISSERIE
101	CASTER WITH BRAKE	2	ROU100F-1	ROTISSERIE
102	GLASS BRASS KNOB	2	BTU75045	ROTISSERIE
104	DECORATIVE BRASS FRONT CAP 1375	2	DECOR CASAV 1350 L	OLYMPIA 1375
105	BRASS SETS SIDE CAP	4	DECOR CASCOT L	OLYMPIA
106	SETS STAINLESS FRONT CAP 1375	2	DECOR CASAV 1350 I	OLYMPIA 1375
107	CAP STAINLESS STEEL SETS SIDE	4	DECOR CASCOT I	OLYMPIA
108	SECONDARY AIR ADJUSTMENT	2	1350NGFR	OLYMPIA

All this information are the property of Rotisol.

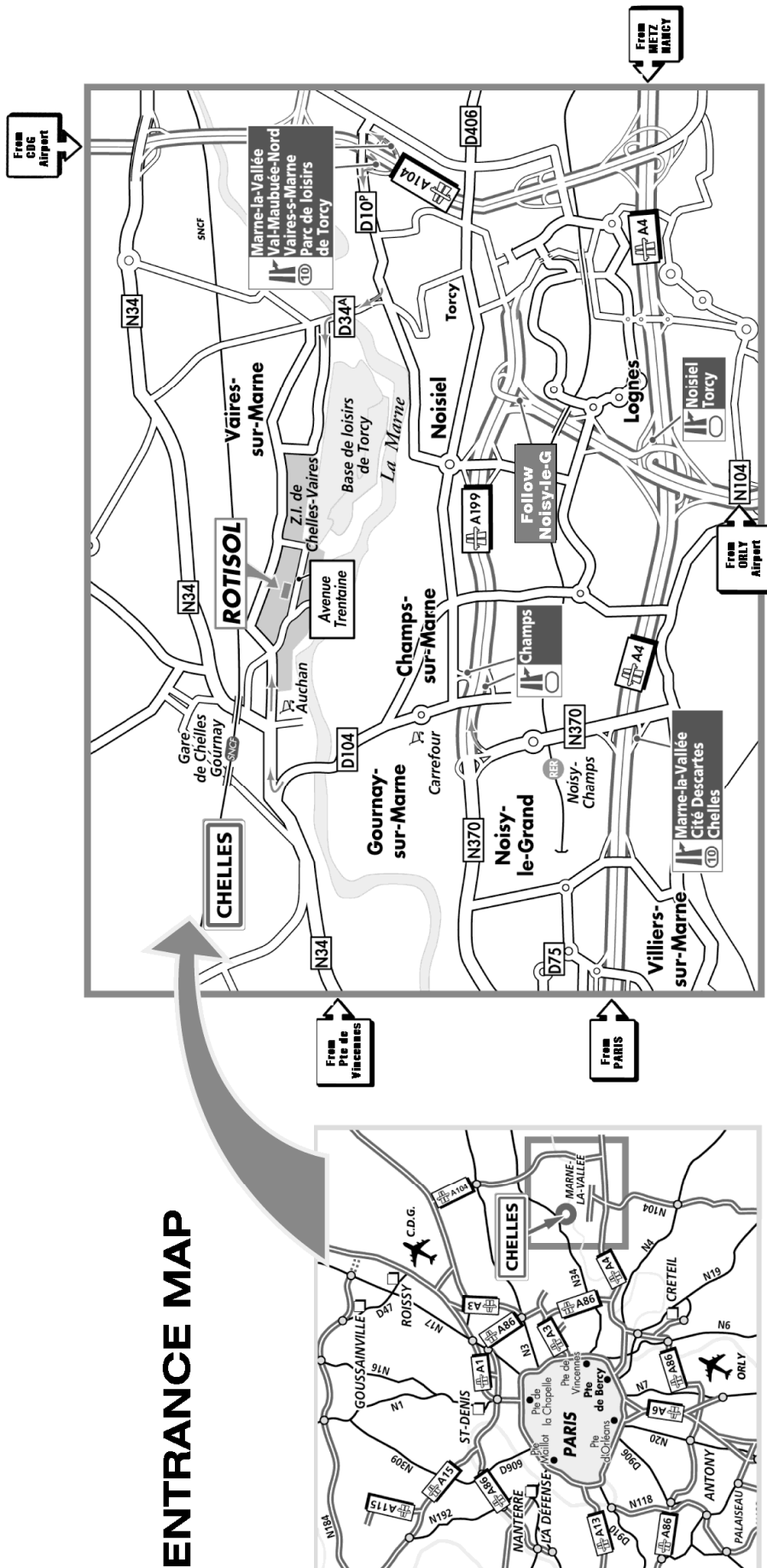
Reproduction partial or in totality are prohibited without authority prior written of company Rotisol.

ROTISOL-EST Sp-z o.o.

ul. Przemysłowa 7c 11-700 MRAGOWO POLAND
Tel. / fax : 0048 89 741 32 70 - Tel. : 0048 89 741 16 05
Tel. kom : 0048 0603 634 927
E-mail: info@rotisol.com.pl www.rotisol.pl

ROTISOL France, Inc

415 W. Walnut - St GARDENA, CA90248-USA
Toll free: 800 651 5969 Tél: (310) 671 7254 Fax: (310) 671 8171
E-mail: info@rotisolusa.com www.rotisolusa.com



From Charles-de-Gaulle (CDG) Airport : join motorway A1, direction Paris, then follow A104 la Francilienne, direction Marne-la-Vallée. Take exit n° 10 Marne-la-Vallée/ Val Maubuée Nord / Vaires-sur-Marne / Parc de Loisirs Torcy (and follow the map).

From Metz / Nancy : join motorway A31 direction Paris, then follow A104 la Francilienne, direction Marne-la-Vallée / Val de Lagny / Lagny-sur-Marne. Take the exit n° 10 Marne-la-Vallée/ Val Maubuée Nord / Vaires-sur-Marne / Parc de Loisirs Torcy (and follow the map).

From Paris by train : Gare de l'Est station, direction Meaux. Exist at Gare de Chelles / Gournay station (30 minutes).

Depuis Paris by RER : Hausmann / Saint-Lazare station, take RER E4 (EOLE), direction Chelles / Gournay. Exist at Chelles / Gournay RER station (20 minutes).